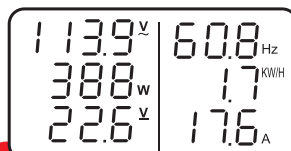


# 300W / 500W DIY GRID-TIE INVERTER

- Utility tied PV inverter with sinusoidal supply current
- High power conversion efficiency
- Low output current THD
- LCD display – system data
- Anti-islanding design
- Direct plug into wall outlets
- Protections:  
Short circuit / Overload / Low voltage  
High voltage / Islanding / Over temperature
- Approved by CE, FCC, UL1741, IEEE1547, CB

## LCD Display



V : AC Voltage      Hz: Hertz  
W: Watt              KWH: Kilowatt per hour  
V : DC Voltage      A: Ampere



AC Output



DC Input

## How it works ?



| Item no.                            | UP-8P6C                |             | UP-8P6G     |             | UP-8P8C           |             | UP-8P8G     |             |
|-------------------------------------|------------------------|-------------|-------------|-------------|-------------------|-------------|-------------|-------------|
| Max. continuous watt                | 300W                   |             | 500W        |             | 300W              |             | 500W        |             |
| DC input voltage range              | 24V(19-41V)            | 48V(37-63V) | 24V(19-41V) | 48V(37-63V) | 24V(19-41V)       | 48V(37-63V) | 24V(19-41V) | 48V(37-63V) |
| DC input low voltage protection     | 19±0.5V                | 37±1V       | 19±0.5V     | 37±1V       | 19±0.5V           | 37±1V       | 19±0.5V     | 37±1V       |
| No load current                     | ≤0.1A                  |             |             |             |                   |             |             |             |
| DC input high voltage protection    | 41.5±0.4V              | 63.5±0.5V   | 41.5±0.4V   | 63.5±0.5V   | 41.5±0.4V         | 63.5±0.5V   | 41.5±0.4V   | 63.5±0.5V   |
| Input fuse (outside)                | 20A x 1                | 10A x 1     | 40A x 1     | 20A x 1     | 20A x 1           | 10A x 1     | 40A x 1     | 20A x 1     |
| DC input high connecting protection | Fuse                   |             |             |             |                   |             |             |             |
| AC output voltage range             | 120V (105.6-132V)      |             |             |             | 230V (184-264.5V) |             |             |             |
| AC voltage frequency range          | 60±1.0 HZ              |             |             |             | 50±1.0 HZ         |             |             |             |
| AC output power factor (PF)         | >0.9                   |             |             |             |                   |             |             |             |
| AC output total harmonic distortion | <5%                    |             |             |             |                   |             |             |             |
| Continuous output power             | 300±20W                |             | 500±30W     |             | 300±20W           |             | 500±30W     |             |
| Input voltage (VDC)                 | 27.6±0.5               | 52±1.0      | 27.6±0.5    | 52±1.0      | 27.6±0.5          | 52±1.0      | 27.6±0.5    | 52±1.0      |
| AC output fuse                      | 250V / 10A x1          |             |             |             |                   |             |             |             |
| Dimension / Weight                  | 27 x18 x 8 CM / 1.7 KG |             |             |             |                   |             |             |             |