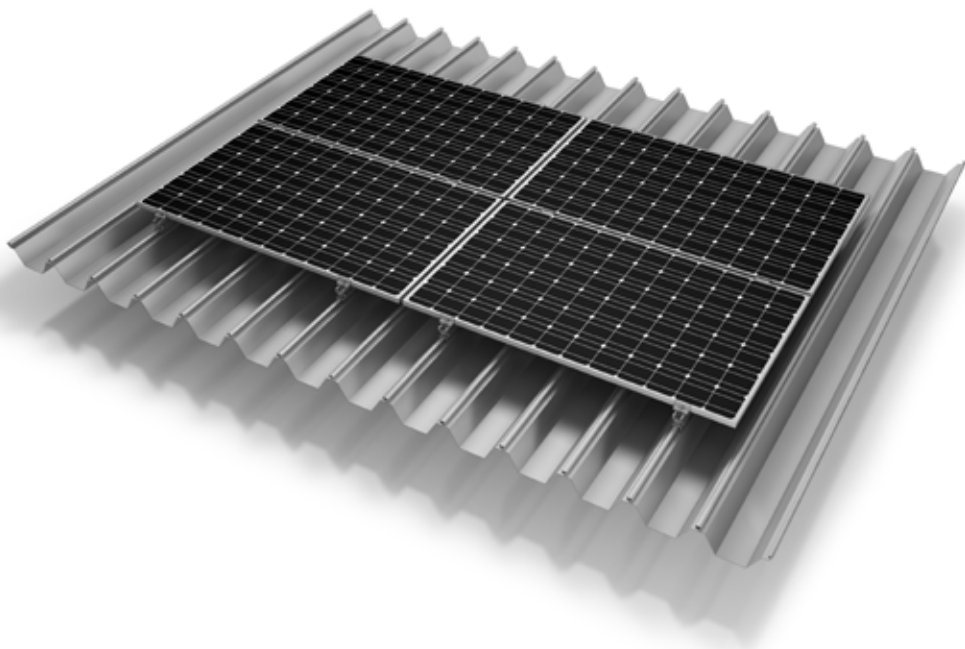


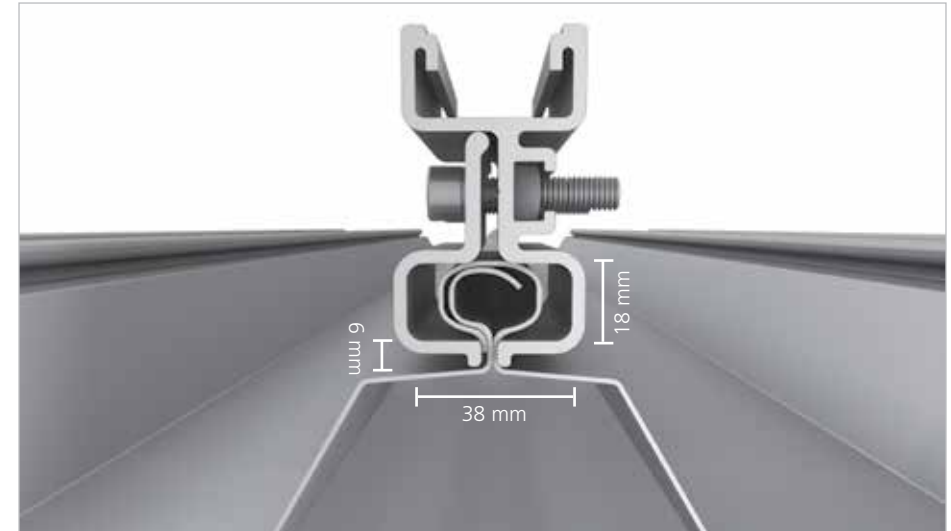
Mounting systems for solar technology



K2 SYSTEMS
SLOPED ROOF SYSTEMS
CLAMPRAIL SYSTEM

CLAMPRAIL SYSTEM

- For roofs with different Standing seam roofing
- Mounting by clamping below the fold
- No roof penetration
- High holding forces
- High flexibility and easy mounting
- Direct mounting possible with module clamps
- Pre-defined clamping area of the module manufacturer must be observed, is this not possible due to the standing steel, an assembly of cross bracing is required eg by K2 CrossRail
- Design in aluminum
- Modular structure suitable for any system size

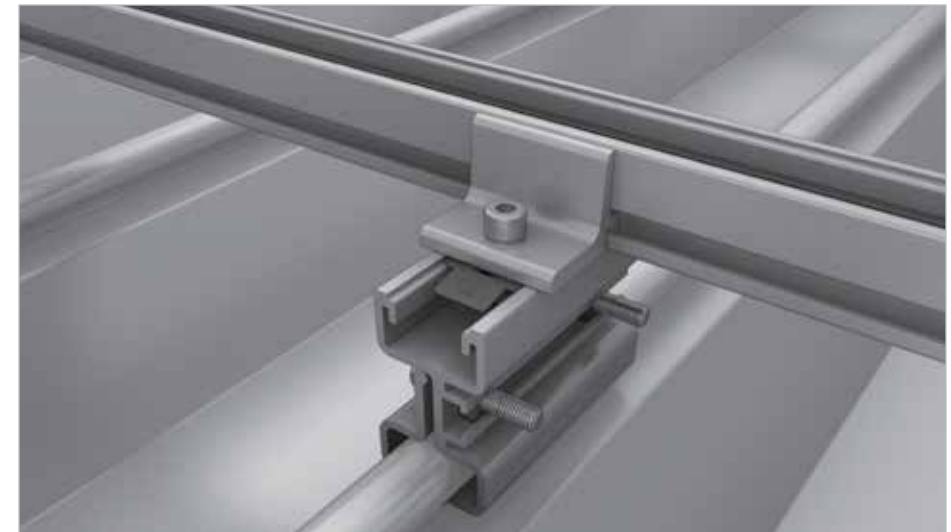


Detail illustration - Seam metal tolerances



Technical data

| | |
|------------------------------------|--|
| Field of application | Sloped roof |
| Roofing | Seam metal system |
| PV modules | Suitable for all standard framed module types |
| Module orientation | Portrait (direct fixing) and Landscape (with Cross bracing) |
| Material | Aluminium (EN AW-6063 T66) |
| Connecting elements | Stainless steel screws A2-70 |
| Roof connection | Screw connection / Klemmung |
| Static principles | Determination of load capacity values by independent test institutes |
| Load assumption in accordance with | DIN EN 1991 (Eurocode 1) |
| System components | K2 ClampRail, End- and Middleclamp Sets, for Cross bracing with CrossRail, Climber Set |



Example of assembly with CrossRail 36

SERVICE-HOTLINE
+49 (0)7152 3560-0
www.k2-systems.com

Produktblatt ClampRail | GB2 | 0813 | Subject to change
Product illustrations are exemplary illustrations and may differ from the original.

